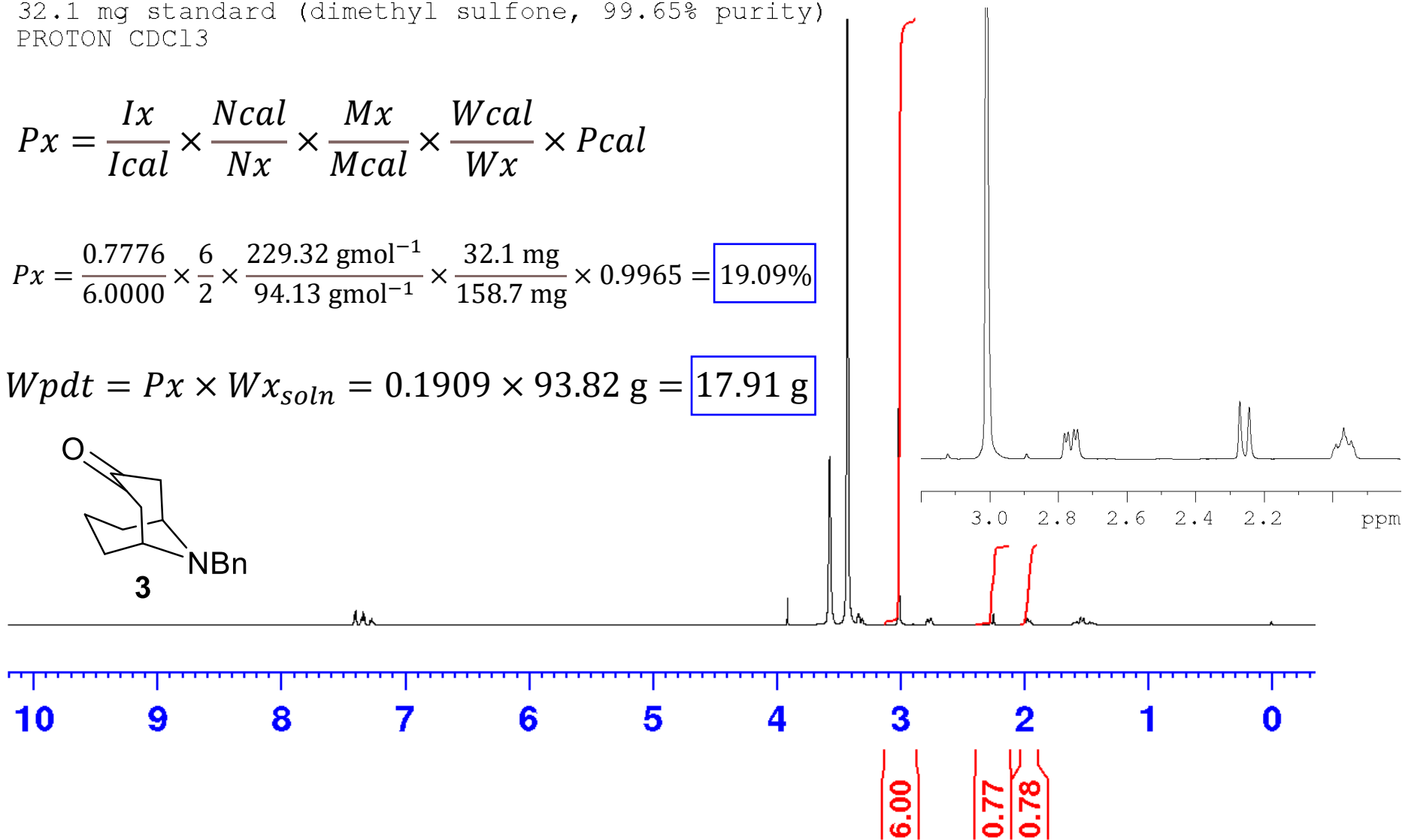
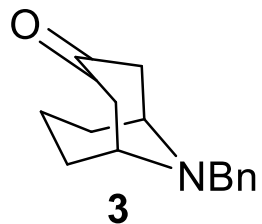


158.7 mg crude solution (93.82 g total)  
 32.1 mg standard (dimethyl sulfone, 99.65% purity)  
 PROTON CDCl3

$$Px = \frac{Ix}{Ical} \times \frac{Ncal}{Nx} \times \frac{Mx}{Mcal} \times \frac{Wcal}{Wx} \times Pcal$$

$$Px = \frac{0.7776}{6.0000} \times \frac{6}{2} \times \frac{229.32 \text{ gmol}^{-1}}{94.13 \text{ gmol}^{-1}} \times \frac{32.1 \text{ mg}}{158.7 \text{ mg}} \times 0.9965 = 19.09\%$$

$$Wpdt = Px \times Wx_{soln} = 0.1909 \times 93.82 \text{ g} = 17.91 \text{ g}$$



F2 - Acquisition Parameters  
 Date\_ 20210525  
 Time 13.16 h  
 INSTRUM spect  
 PROBHD Z148658\_0003 (  
 PULPROG zg30  
 TD 65536  
 SOLVENT CDCl3  
 NS 24  
 DS 2  
 SWH 12019.230 Hz  
 FIDRES 0.366798 Hz  
 AQ 2.7262976 sec  
 RG 18.2  
 DW 41.600 usec  
 DE 6.50 usec  
 TE 296.3 K  
 D1 4.00000000 sec  
 TD0 1  
 SFO1 600.0087050 MHz  
 NUC1 1H  
 P1 15.50 usec  
 PLW1 13.23200035 W

F2 - Processing parameters  
 SI 65536  
 SF 600.0049531 MHz  
 WDW EM  
 SSB 0  
 LB 0.30 Hz  
 GB 0  
 PC 1.00